



YOUR NEW ZEALAND MANUFACTURED ORGANIC SOLUTION  
TO A CLEAN GREEN ENVIRONMENT

## Bio-Zyme Trial for Wellington Water

---

**Site Visit:** 21 August 2019

Bio-Zyme will supply all products for the duration of the trial.

**Location:** Blair St Wellington Central

One Restaurant will be the source of delivery

### Set up

---

**Shock dose the drain Monday 30th August** through the cleaner's basin in the kitchen with 20L of Bio-Zyme Industrial

Change over the pump **New pump to be installed Monday 30th August**, which is programmed to run half hourly 9 am - 12 pm daily administering 100mL per dose which equals 2.8L per day. Set up a 20L of Bio-Zyme Industrial on the pump and replace with 20L when empty weekly.

Wellington Water have had the camera down the line already and will put the camera down again 2 weeks after the start of the trial, and 2 weeks later to evaluate the progress of the trial.

### Products for Trial

---

1 x Bio-Zyme Dose It Pump

5 x 20L Bio-Zyme Industrial **N/C**

**NOTE:** Bio-Zyme may cause fat burps in line to Pump Station initially as it breaks down fat in line.

There are 18 businesses discharging into the Blair St sewer main.

Of them 14 are food premises.

Shelley Haynes  
National Sales/Account Manager  
Bio-Zyme NZ Limited

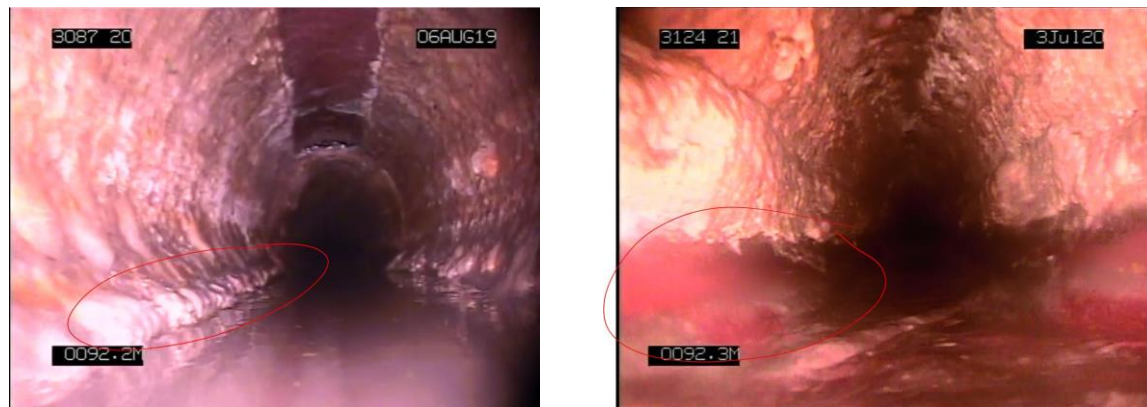
11 August 2020

### Bio-Zyme product trial in Wellington CBD

Dear Shelley

Wellington Water, on behalf of Wellington City Council, looks after trade waste discharges and sewage system maintenance in Wellington City.

In August 2019, Bio-Zyme NZ Limited approached Wellington Water for an opportunity to trial their product's performance for grease & fat reduction in sewage pump stations and pipelines. After Wellington Water set up the parameters and location for the trial, Bio-Zyme Ltd organized and paid for the product, which is known as "Industrial", to be dosed into wastewater system via a local restaurant. To demonstrate the results, we did CCTV both before and after the trial, I have attached some before and after images from the footage below.



*The before (left) footage was recorded on 06/08/2019 and after (right) was from 3/07/2020. Notice the big difference on the circled area.*

Comparing the footage, it's obvious that there is significantly less fat in the "After". Although we have to take into account that the lockdown period might contribute to the cleaner state of the pipes, I still believe the product was the main cause of this fat reduction. Going forward, I am going to recommend "Industrial" to our operations group as a possibly more feasible option for pump stations that've been suffering from fat blockages.



**Leon Chen**  
Trade Waste Technical Officer  
Wellington Water  
021 820 943  
Leon.Chen@WellingtonWater.co.nz